

HD

**Submersible
& Hi-Flow**

24 Hours Operation

Solids Pass: 10mm

Liquid temperature: 0°C to
40°C/ +32°F to +104 °F

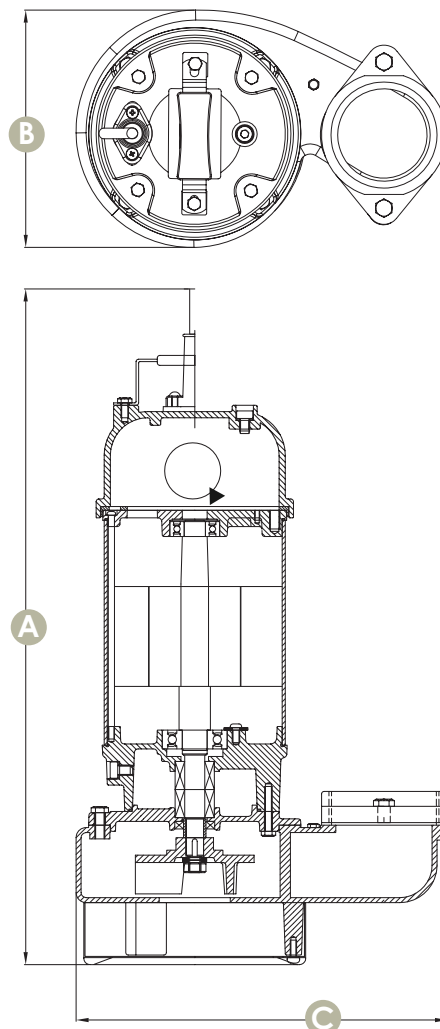
HP range: 1 HP to 2 HP /
0.75 kW to 1.5 kW

pH: 6 to 8

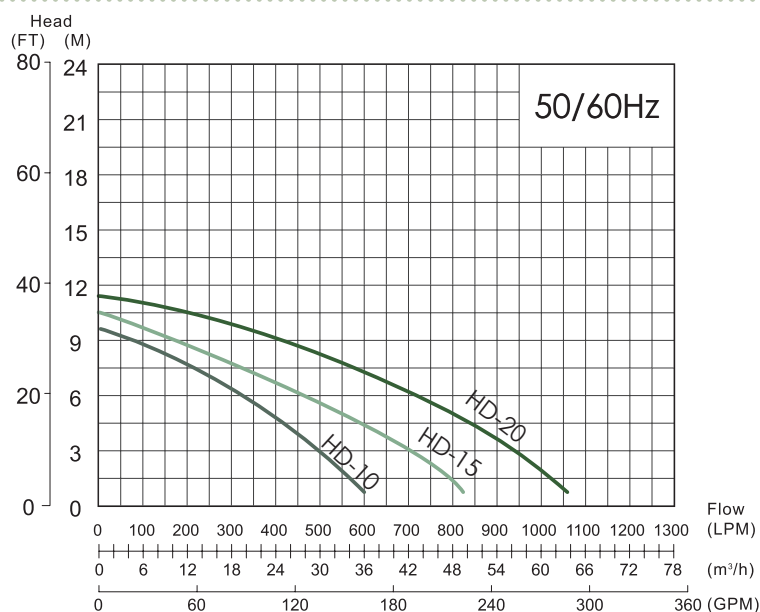
Rated Speed: 2900/3450rpm

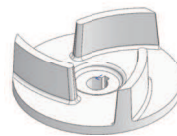
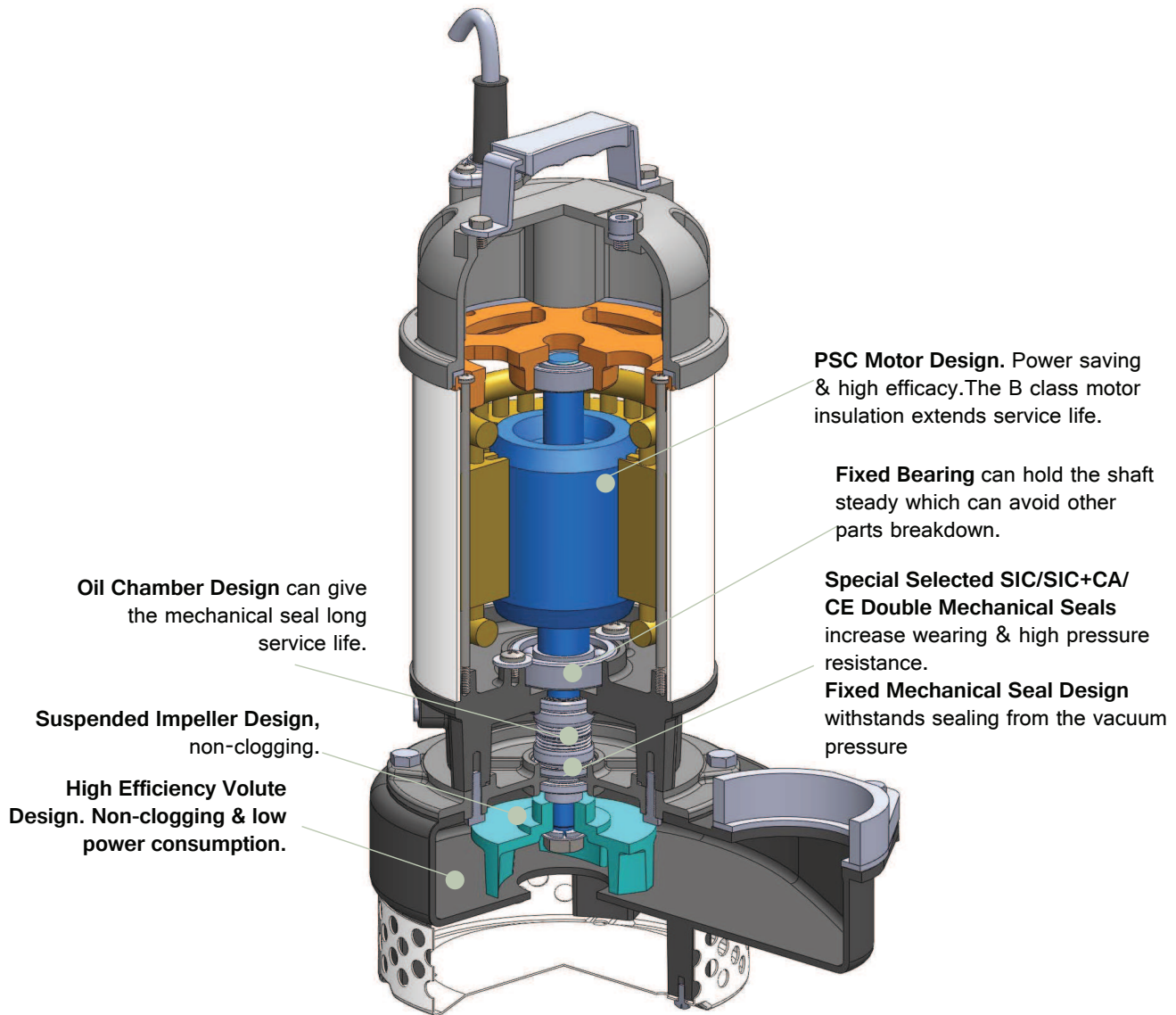
Protection class: IP68

Maximum depth: 8M



Dimension		Unit:mm		
Model	A	B	C	
HD-10	528	190	297	
HD-15	541	190	297	
HD-20	598	198	309	





Impeller Design



Optional with Float Switch

Specifications

Model No.	Output		Outlet		Solid Pass	Max	LPM Flow @ Head					Max	Dimension	Weight
	HP	kW	mm	inch	Dia(mm)	Flow(LPM)	3M	4.5M	6M	7.5M	9M	Head(M)	L x W x H(mm)	Kg
HD-10	1	0.75	80	3"	10	600	530	440	320	175	45	9.5	297 x 190 x 528	23
HD-15	1.5	1.1	80	3"	10	820	710	580	440	270	100	10	297 x 190 x 541	27
HD-20	2	1.5	80	3"	10	1050	990	900	790	630	450	11.5	309 x 198 x 598	31